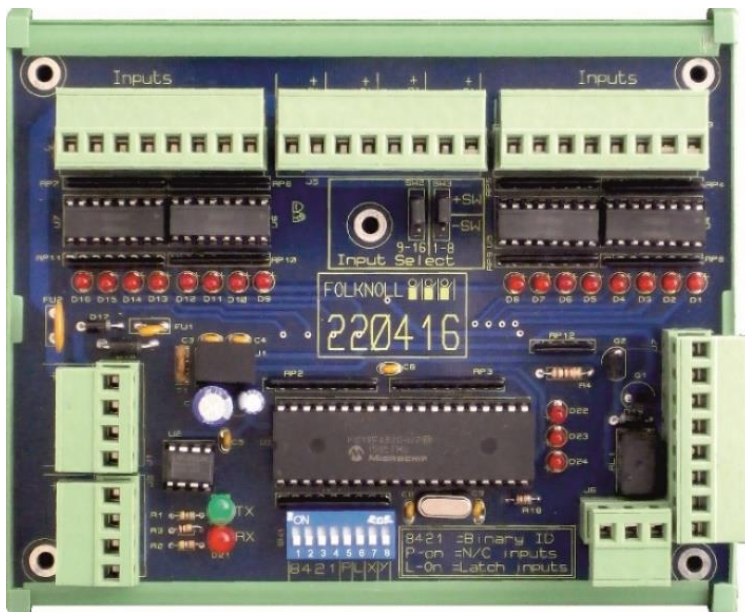


## DT7550.98 16 REVERSIBLE INPUT CONTROLLER



- Monitors up to 16 channels
- Can be used for Folknoll basic, alarm strip and monitored systems
- Input polarity can be reversed in groups of 8 for compatibility with third party systems
- Individual input and bus status diagnostic LEDs
- Alarm accept function
- Offers power distribution for attached systems
- Can be looped together for larger systems.
- Can be supplied as a complete control system in a Folknoll wall mount enclosure with battery backed PSU.
- Compatible with Folknoll remote monitoring

### DISABLED TOILET ALARMS

Our vandal resistant BS8300:2009 compliant disabled toilet alarm system provides cost-effective solutions built from standard and bespoke units. Our toilet alarms can be combined with disabled refuge EVC, fire telephone and other systems. Ideal for shops, offices, hotels and other public spaces.

### INPUT CONTROLLERS

Our input controllers monitor alarm states and transmits them to alarm panels or other monitoring devices. Each controller offers 16 channels, which can be used to monitor up to 16 basic toilets, 8 toilets with alarm strips, 8 toilets with fault monitoring or combinations of the above.

Controllers are usually supplied in a Folknoll wall mount enclosure complete with battery backed PSU, making a complete control system for part or all of a disabled toilet system. Local part systems can be linked together over IP or RS485 to provide a large alarm system for large buildings, campuses, etc.

### DT7550.98 16 REVERSIBLE INPUT CONTROLLER

The DT7550.98 16 Reversible Input Controller offers a 16-channel input controller (arranged as two groups of 8), with alarm accept/acknowledge signal for Folknoll enhanced alarm systems and toilet power distribution.

The controller is addressable and can be networked over RS485 to monitor up to 256 channels. Data and power can be looped through each board using the **IN** and **OUT** terminals.

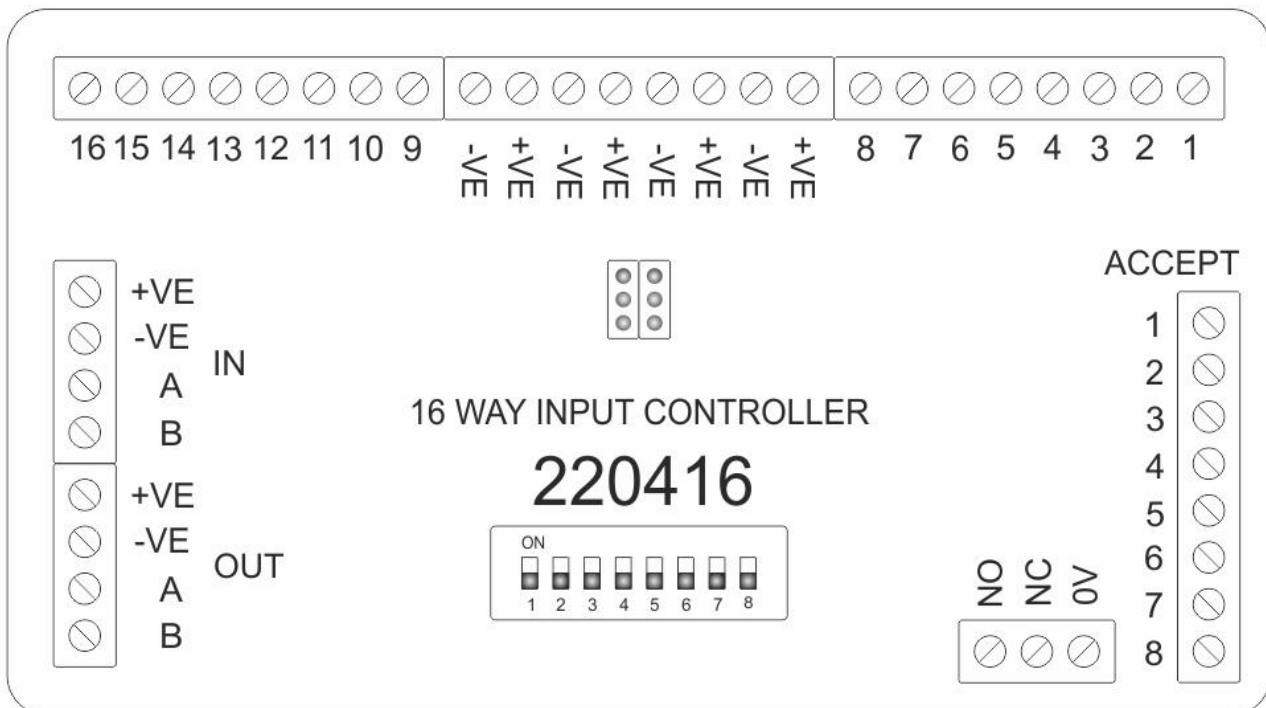
This control board offers individual diagnostic LEDs for RS485 signals and alarm inputs to aid installation and fault finding. All connections are through pluggable terminal blocks for ease of installation and maintenance.



## SPECIFICATIONS

- Inputs: 16 channels arranged as 2 groups of 8  
The input polarity of each group is individually reversible
- Outputs: Accept signal for Folknoll enhanced systems
- Diagnostic: Individual diagnostic LEDs for RS485 signals and alarm inputs
- Dimensions: Width: 144mm, height: 108mm (approx.)
- Power: 12V / 24V (Usually supplied from battery backed system PSU)

## CONNECTIONS



## ABOUT US

We are a UK based company with over 30 years of design and manufacturing experience. All of our products and systems are designed for toughness, reliability, easy installation, simple configuration, straightforward operation and low maintenance. As original manufacturer all of our product ranges can be customised to suit your application. Including custom engraved panels, additional features and special systems.

Please contact us for further information about our wide range of products and services and find out how we can provide a solution for you.



Old North Rd, Royston, HERTS, SG8 5DT, UK  
+44 (0) 1763 234567  
sales@folknoll.co.uk www.folknoll.co.uk