

## RA7705.01/05 MASTER STATION, STANDARD, 5-WAY



- Standard system master for up to 5 outstations
- LCD status display, speaker, microphone, fault LED
- High audio output for noisy environments (max 80 dB)
- Tough vandal resistant stainless steel faceplate
- Vandal resistant buttons
- Custom labels available
- Keyed enable switch, anti-tamper fixings
- Ideal for public spaces

### DISABLED REFUGE EVC

Folknoll's vandal resistant, BS 5839-9:2011 compliant, disabled refuge EVC system offers cost effective solutions for shops, offices, hotels and other public spaces.

Our range of outstations, master stations and control equipment enables us to construct a system to suit your requirements including photoluminescent outstations, Braille annotation, induction loops, vandal resistant master stations, third party interfaces etc. We can even combine our disabled refuge systems with fire telephones, disabled toilet alarms, and other building alarms to provide cost effective solutions for smaller sites.

All of our disabled refuge systems have keyed enabled switches, integral fault monitoring, and can be powered from a battery backed power supply providing at least 24 hours of standby and 30 minutes of operation.

### STANDARD SYSTEMS

For larger systems sites, we offer our standard system, with more outstations, additional cabling options, 3<sup>rd</sup> party interfaces and vandal resistant master stations.

### RA7705.01/05 MASTER STATION, STANDARD, 5-WAY

Our RA7705.01/05 Master Station, Standard, 5-Way offers a vandal resistant surface or flush mount master station refuge EVC systems of up to 5 outstations.

The unit has an integral microphone and speaker and is fitted with an LCD display, keyed enable switch, fault LED and large control buttons. The speaker volume and microphone gain can be adjusted to suit the operating environment, with a maximum output of 80 dB for noisy areas. The master station is usually mounted in a staffed area, e.g. control room or reception and used is for communication with users in the event of an emergency.

**CONSTRUCTION:** The faceplate is made from vandal resistant, brushed finish stainless steel with black annotation. The unit is usually supplied with a surface or flush mount back box. Other finishes, alternative annotation and custom back boxes are available on request.

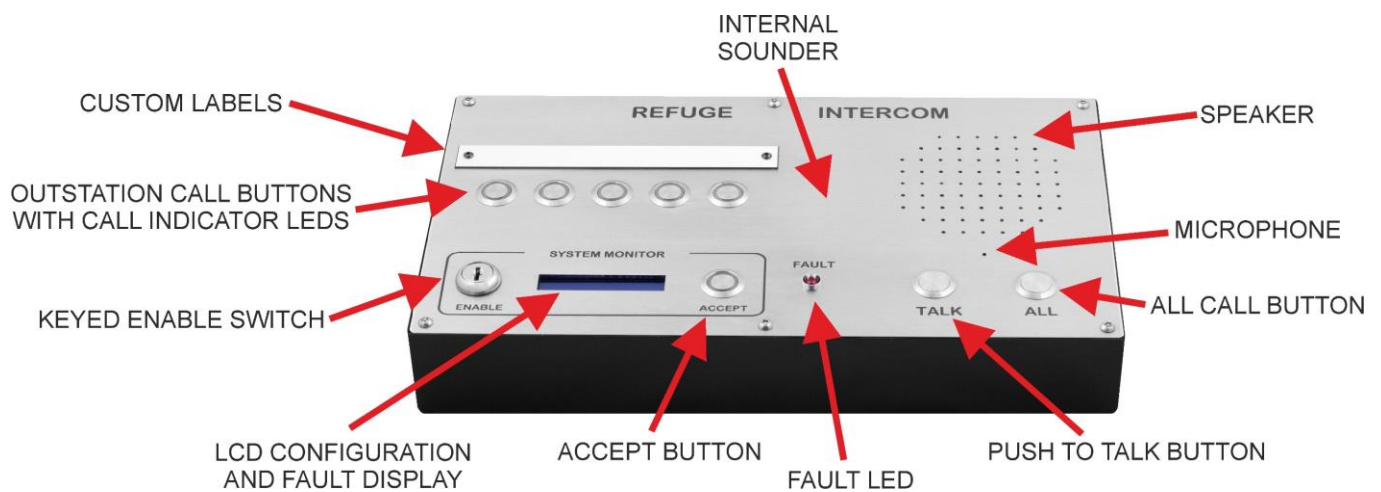
**FIRE RESISTANT CABLES:** The unit is designed to accommodate fire resistant cables, with screw terminal connections and space within back boxes for larger glands and cables.



## SPECIFICATIONS

Faceplate:	Stainless steel, brushed finished, black annotation
Dimensions:	Width: 350mm, height: 200mm (approx.)
Back box:	Mild steel, painted finish, black
Mounting:	Surface or flush
Audio:	Adjustable (max 80 dB)
Power:	24V, (usually supplied by standard system, monitored, battery backed PSU)

## FEATURES



## ABOUT US

We are a UK based company with over 35 years of design and manufacturing experience. All of our products and systems are designed for toughness, reliability, easy installation, simple configuration, straightforward operation and low maintenance. As original manufacturer, all of our product ranges can be customised to suit your application. Including custom engraved panels, additional features and special systems.

Please contact us for further information about our wide range of products and services and find out how we can provide a solution for you.



Old North Rd, Royston, HERTS, SG8 5DT, UK  
+44 (0) 1763 234567  
sales@folknoll.co.uk www.folknoll.co.uk